

# LAKE CITY NEWSLETTER

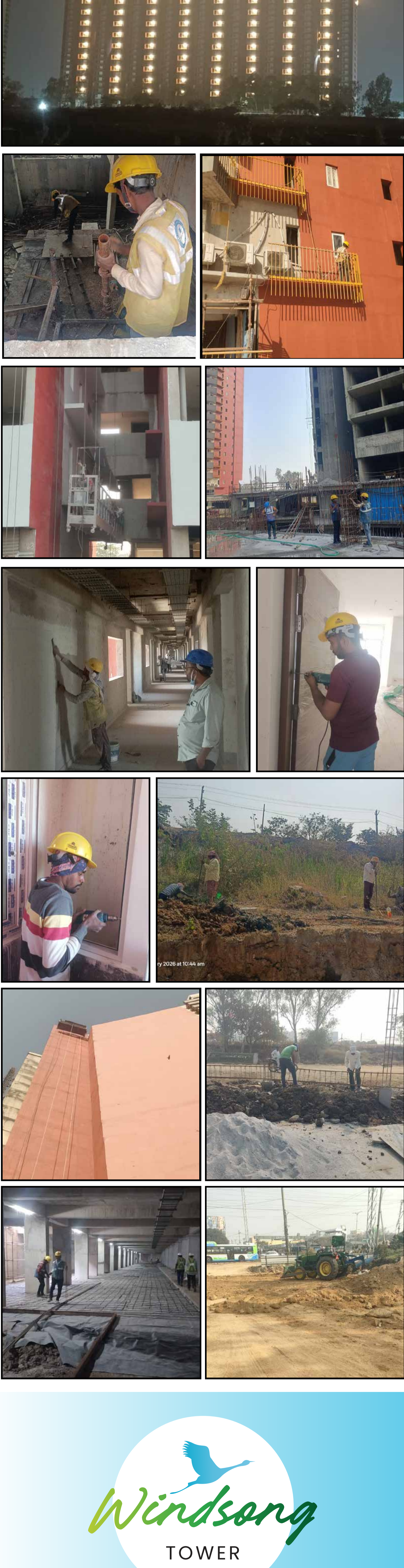
Vol.55  
January  
2026

## Renewal, Direction, and New Beginnings

As we step into January, a new year opens with fresh intent and possibility. It's a time to reset, realign, and move forward with clarity. With renewed focus and defined goals, we begin shaping the path ahead, transforming vision into action and purpose into progress, one deliberate step at a time.

### A Quick Round-up Of Recent Developments On Site

Towers A & B				
Activity	Tower A		Tower B	
Structure Works	<b>Works</b>	<b>% Completed</b>	<b>Works</b>	<b>% Completed</b>
	a) Terrace, OHT, LMR b) Basement c) Podium d) Parapet wall at Podium level e) Earthen Ramp f) Backfilling works around the retaining wall g) Grade slab works at B2	100% 100% 100% 100% 90% 95% 45%	Terrace OHT LMR Basement Podium	94% 100% 100% 60% 25%
Brickwork & Plastering	<b>Block work</b>		<b>Block work</b>	
	<b>Floors</b>	<b>% Completed</b>	<b>Floors</b>	<b>% Completed</b>
	1st to 23rd	100%	5th, 7th to 19th & 22nd 3rd & 6th	100% 75%
Water Proofing	<b>Plastering work</b>		<b>Plastering work</b>	
	<b>Floors</b>	<b>% Completed</b>	<b>Floors</b>	<b>% Completed</b>
	1st to 23rd	100%	10th, 12th to 18th 5th 7th, 8th & 11th	100% 94% W.I.P
Painting	<b>Floors</b>	<b>% Completed</b>	<b>Floors</b>	<b>% Completed</b>
	2nd to 23rd 1st floor - 90 % completed (only balconies are pending)	100%	12th to 18th 11th & 10th	100% W.I.P
Flooring	<b>Floors</b>	<b>% Completed</b>	<b>Floors</b>	<b>% Completed</b>
	15th to 18th 8th to 14th 19th & 6th 7th 5th 4th Basement -1 Basement -2	100% 85% 70% 65% 60% 25% 75% 30%	17th 18th 16th 15th	88% 37% 45% 40%
Doors & Windows	<b>Flats/Floors</b>	<b>% Completed</b>	<b>Floors</b>	<b>% Completed</b>
	2nd, 4th to 19th 20th	100% 80%	17th 16th	100% 25%
CP & Sanitary Works	<b>Corridors/Floors</b>	<b>% Completed</b>	<b>Floors</b>	<b>% Completed</b>
	2nd, & 5th to 19th	100%	17th 16th	100% 25%
Fire fighting Works	<b>Doors/Floors</b>	<b>% Completed</b>	<b>Floors</b>	<b>% Completed</b>
	a) 14th to 18th b) 10 to 13th c) Received windows for 9th floor	100% 40% 100% 75%	17th	100%
UG Tanks	<b>Windows/Floors</b>	<b>% Completed</b>	<b>Floors</b>	<b>% Completed</b>
	a) 11th to 18th b) 10th floor c) Received windows for 9th floor	100% 100% 75%	17th	100%
STP	<b>CP &amp; Sanitary Works</b>	<b>% Completed</b>	W.I.P	
	16th, 17th, 18th	100%	W.I.P	
External Painting	<b>Fire fighting Works</b>	<b>% Completed</b>	<b>Floors</b>	<b>% Completed</b>
	11th to 18th 20th & 21st 10th 8th & 9th 7th 6th	100% 90% 75% 65% 50% 40%	18th to 14th 13th-12th	100% 80%
Railing works	<b>UG Tanks</b>	UG Tank Completed		
	North side - East side - West side - South Side -	100% 95% 85% 95%	% Completed Surface preparation W.I.P - 63% completed	
Electrical - Sub station (HT 6 pole structure)	<b>STP</b>	STP Civil work is in progress - 93% completed.		
	a) 2nd - Terrace - b) East side Railing painting work - c) West side railing painting work -	100% 100% 82%	<b>External Painting</b>	% Completed Surface preparation W.I.P - 63% completed
Lift Shafts & Material	<b>Electrical - Sub station (HT 6 pole structure)</b>	<b>Erection for electrical sub station works :</b> a) 6 pole structure works completed b) AB switches erection work complete c) PT's , CT's & VCB received to site from the department and installation also completed. d) 33kv - 5 Towers erection completed		
	a) 1 Lift is ready for operation b) 3 lifts are in W.I.P	<b>Lift installation works started in 4 lifts.</b> a) 1 Lift is ready for operation b) 3 lifts are in W.I.P		
Clubhouse	<b>External Road works &amp; compound wall</b>	a) Road base works (cutting, filling & compaction works) for external road and drain works are in progress. b) Entrance compound wall foundation works in progress. c) PCC for storm water drain works are in progress.		
	Foundation - 100% Completed (i) B-1 floor slab - 65% completed. (ii) Stilt floor slab - 65% Completed. (iii) Fire tank foundations completed. (iv) Wall concreting work is in progress - 60%			

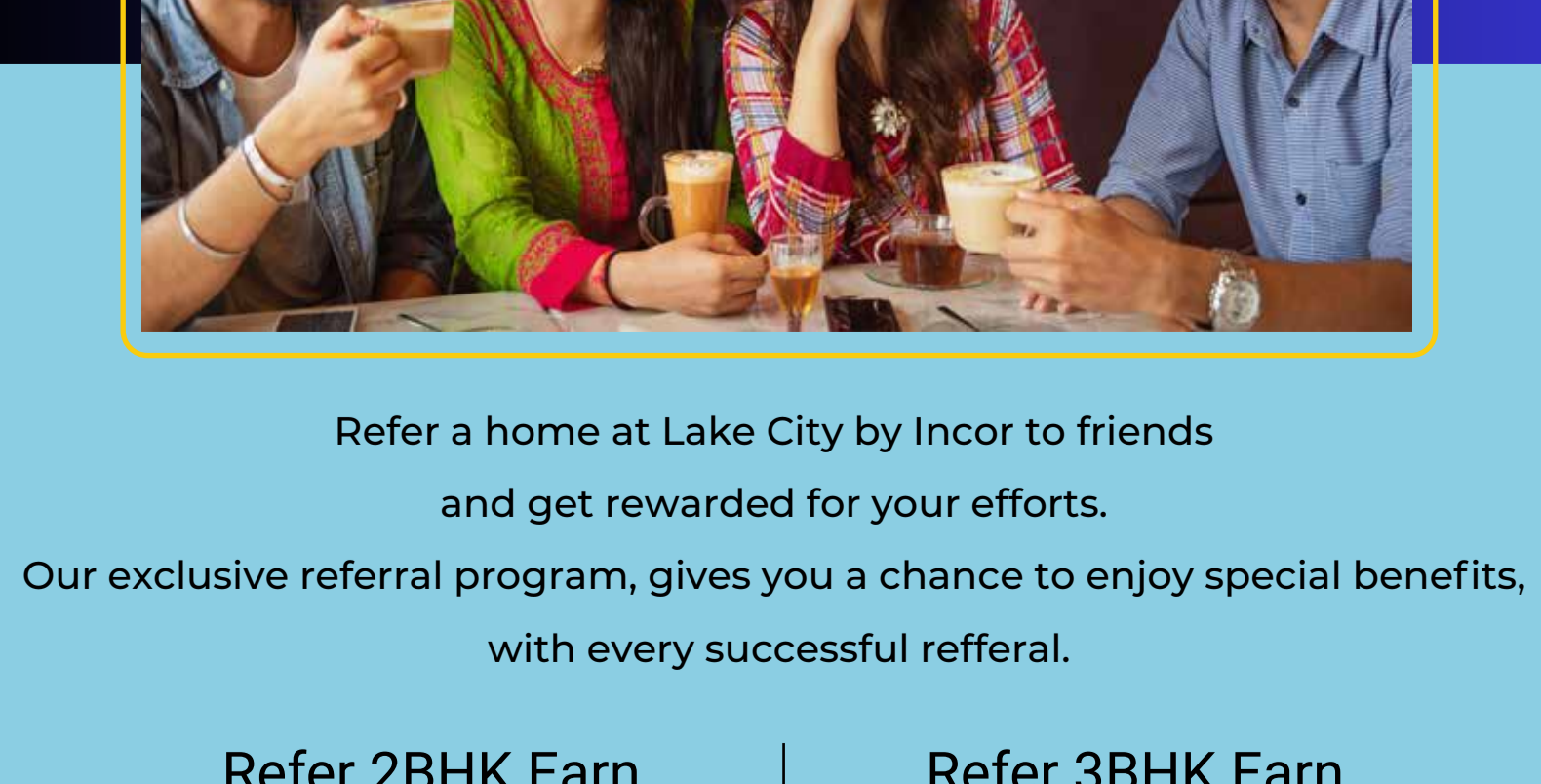


## Windsong TOWER

### This Month On Site At

#### Tower E

Activity	Status
Tower-E	<ul style="list-style-type: none"> <li>Excavation - 95% completed.</li> <li>PCC - 85% completed.</li> <li>Raft reinforcement - 23%.</li> <li>Raft shuttering - 15%</li> </ul>
Tower-E Mockup	<ul style="list-style-type: none"> <li>Mock up works completed</li> </ul>



### Know Someone Looking for a Home?

Refer Incor Lake City & Get Rewarded!



Refer a home at Lake City by Incor to friends and get rewarded for your efforts.

Our exclusive referral program, gives you a chance to enjoy special benefits, with every successful referral.

Refer 2BHK Earn **₹ 75,000**

Refer 3BHK Earn **₹ 1,00,000**

**82972 91717**

Submit your referral on this number or email

[enquiries@incorlakecity.com](mailto:enquiries@incorlakecity.com)